



Performing Arts  
Division -  
Technical Support  
Unit

**Sha Tin Town Hall**  
No. 1, Yuen Wo Road  
Sha Tin,  
NT, HK  
Phone  
852-2694 2509  
Fax  
852-2693 4878

**CONTACTS**

**Winnie POON**  
Senior Manager (NTE)  
Venue  
Direct Line  
852-2694 2505

**Leo LEUNG**  
Manager (NTE) Operations 1  
[lkmlung@lcsd.gov.hk](mailto:lkmlung@lcsd.gov.hk)  
Direct Line  
852-2694 2506

**Dennes KWAN**  
Resident Technical Manager  
(NTE)  
[dyykwan@lcsd.gov.hk](mailto:dyykwan@lcsd.gov.hk)  
Direct Line  
852-2694 2571

**GENERAL SET-UP**

*The Auditorium operates on a 'bare-walls' touring policy. That is, all equipment is normally set-up and struck within the booking period. Hirers are reminded to allow sufficient preparation time to hang theatre masking, rig all overhead stage lighting and setup sound system. Check with our Resident Technical Manager for any other equipment and technical enquiry.*

# Sha Tin Town Hall - Auditorium

## FULL Technical Information

V. 2023.12.6

Page 1 of 8



The Sha Tin Town Hall Auditorium is a traditional proscenium theatre designed and fully equipped to stage major Opera, Dance and Musicals. It is also used for large-scale Drama, Chinese Opera and Variety performances.

**DIRECTIONS**

MTR:  
East Rail Line, Sha Tin Station

Driving Route (From S to N):  
Shing Mun Tunnel / Lion Rock Tunnel → Sha Tin Centre Street → Wang Pok Street → Yuen Wo Road

Tai Po Road → Sha Tin Rural Committee Road → Yuen Wo Road

Driving Route (From N to S):  
Tate's Caine Tunnel / Tai Po → Sha Tin Rural Committee Road → Yuen Wo Road



**LOADING**

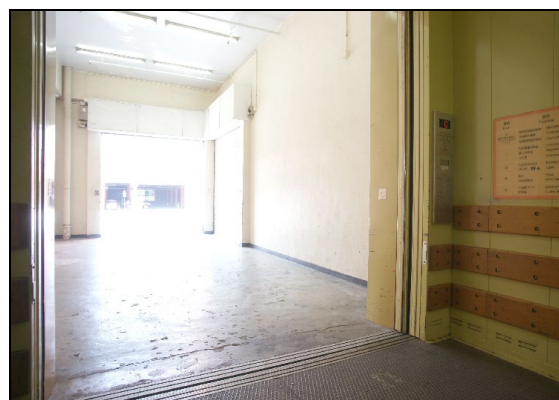
Dock Height: 0.75m  
Roller shutter at tail-board height:  
3.00 x 2.95m (W x H)  
Cargo Lift:  
3.10 x 7.25 x 3.60 m  
(W x D x H)

**STAGE ENTRANCE**

Via cargo lift

**PARKING**

Permit required





**AUDITORIUM**



**Total Seating: 1372**

Stalls: 589

Upper stalls: 443

Balcony: 340

**Removable Seating**

Pit (seats): 73

73 seats will be lost from Stalls Level Row A & Row B for setting orchestra pit.

**PROSCENIUM**

Structural Opening

Adjustable proscenium opening with Header and Legs

18.85 x 8.84m (W x H)

12.00 x 6.00m (W x H) (min.)

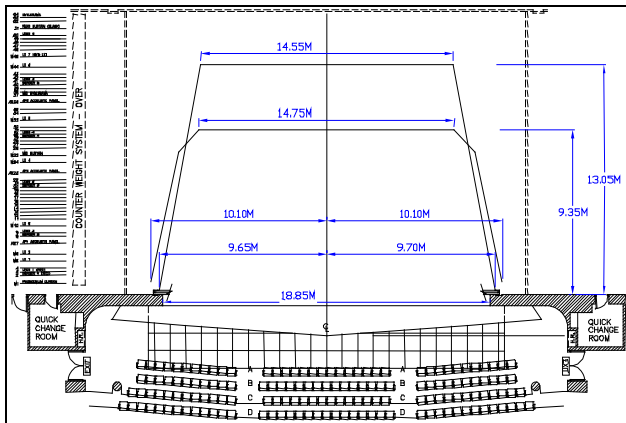
**CONCERT MODE (SOUND CANOPY LAYOUT)**

Medium Enclosure for 80 musicians

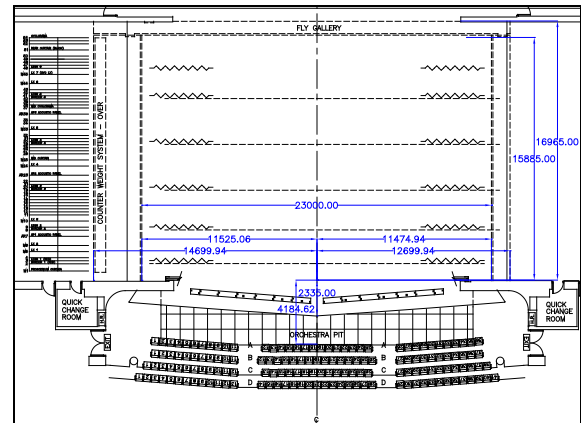
Large Enclosure for 130 musicians

171.42m<sup>2</sup>

229.73m<sup>2</sup>



Concert Mode



Theatre Mode

**STAGE WIDTH**

Centreline to Stage right under gallery

11.53m

Centreline to Stage left under gallery

11.48m

Between fly floors

23.00m

Centreline to Stage right under gallery (off stage)

14.70m

Centreline to Stage left under gallery (off stage)

12.70m

**STAGE DEPTH**

Rear of Proscenium to upstage wall (limit of grid)

16.97m

Rear of Proscenium to Cyclorama Bar 54

15.90m

Rear of Proscenium to stage edge

2.35m (1.05m at Proscenium Opening)

Rear of Proscenium to orchestra pit edge on centerline

4.20m

**STAGE HEIGHT**

Clearance under fly floors

9.07m



Clearance under grid	24.74m
Maximum counterweight bar flying height	23.75m
Above Auditorium	0.74m

**ORCHESTRA PIT**

Orchestra pit area (with a loss of 73 seats)	91.5m <sup>2</sup> (gross)
Depth on CL	2.88m
Height to audience level	2.14m

Pit setup provision with conductor podium, conductor stand, orchestral chairs, stools, music stands and music lights

**STAGE FLOOR**

Flat Danish Oak wooden floor surface	650kg/m <sup>2</sup> SWL
Footlight trough at Down stage (see plan)	

**SIDE STAGE**

Opening	15.00 x 14.00 x 9.07m (W x D x H)
---------	-----------------------------------

**The stage fire shutter is a fire safety installation and cannot be obstructed by scenery, equipment or stage wagon in production.**

**REAR STAGE**

Opening	19.00 x 3.82m (W x H)
Width	19.00m
Depth	8.16m
Height	4.48m

**STORAGE SPACE**

180 m<sup>2</sup> store area with 9.1m (H) clearance between side stage  
100 m<sup>2</sup> store area with 3.8m (H) clearance in rear stage

**CROSSOVER**

Rear of stage and Mezzanine level

**RIGGING (For Theatre mode only)**

**House Curtain** (Red) motor fly or draw Variable Speed (Electric)

**Mid-Curtain** (Black) motor fly or draw Variable Speed (Electric)

**Stage Lighting Bars** - fixed speed electric 7

**Rigging System**

Double purchase counterweights flying bars	40
Bar diameter ( <i>generally</i> )	48mm
Bars distance ( <i>generally</i> )	0.20m
Bar length (except 1, 2, 25)	20m
Bar. 1, 2, 25	22m

Bar 1 and 2 carry the red velvet house curtain & house teaser

Bar 3 carries the red velvet house legs

Bar M25 carries the mid-curtain

Bar M45 carries the cyclorama lights

Capacity 500kg SWL

Pinrail  
None

Side Bar

Triangular trusses suspended from motors running up and down stage from bar M5 to M44, 250kg SWL.



**STAGE EQUIPMENT**

**Stage Drapery**

Black masking	Legs (pairs)	7	flat	5.00 x 11.00m	(W x H)
	Borders	2	flat	20.00 x 3.50m	
		2	flat	20.00 x 5.00m	
		2	flat	20.00 x 7.00m	
	Half tabs	2	flat	12.00 x 12.00m	
Red House Curtain		1	Electrical driven	22.00 x 12.00m	
Black Mid Curtain		1	Electrical driven, Flat	22.00 x 12.00m	
Black Rear Curtain		2	flat	20.00 x 12.00m	
Cyclorama		2		19.50 x 11.00m	
Side Masking		6	On fixed track		
Black Gauze		1		20.00 x 10.00m	

**Orchestra Riser**

Aluminum frame platform. (No drilling or painting)  
2.4 x 1.2m (W x L)      203mm(H) x 8  
407mm(H) x 8  
610mm(H) x 8

Wenger Trouper®

**Choir Riser**

7

Wenger Signature® (4 steps with back rails)

**Conductor Podium**

(can be combined into 2-steps  
podium)

1

1

0.81 x 0.97 x 0.15 m (W x D x H)

1.09 x 0.97 x 0.15 m (W x D x H)

**Conductor Stand**

1

Wenger Flex®

**Orchestral Chair**

100

**Music Stand**

90

Wenger Roughneck®

**High Stool**

8

**Ceremony Chair**

25

**Podium**

1

0.81 x 0.56 x 1.19-1.40m adj. (W x D x H)

**Dancing Tile**

*for dance show only*

10

20 x 2.00m (W x D)

Black for main stage

*(Please allow time to lay the tiles during booking time)*

**Dancing Bar**

10

3.05 x 1.13m (W x H)

**Stage Carpet**

*for Chinese Opera only*

Red 2

Green 2

7.20 x 8.10m (W x D)

7.70 x 9.00m (W x D)

**Instrument**

Concert Grand Piano 2

Concert Grand Piano 1

Timpani 1 set of 4

Chinese drum 1

Steinway & Sons Model D

*(Incur extra charge)*

Kawai GS-100

Yamaha (23", 26", 29", 32")

*(Incur extra charge)*

**Costume Rack**

20

**Table**

Table cover 5

14

5

1.38 x 0.77 x 0.73m (W x D x H)

Magenta

**Lift**

Aerial lift 1

Genie AWP40SDC, 14.1m (Max.)

*Operated by competent person & prior approved by venue management only*



Folding Partition	6	Black	5.94 x 2.02m (W x H)
Hand Pallet Truck	1		2500 kg (Cap)
Semi-automatic Stacker	1	Max lifting height 2 m	1000 kg (Cap)
Stage Braces	40		
Stage Weights	50		

**DRESSING ROOM**

**Mezzanine Level**

A9, 12, 13, 15, 16, 19	6 rooms	each for 2 persons
A10, 17, 18	3 rooms	each for 8 persons
A11	1 room	for 10 persons
A8	1 room	for 14 persons
A14	1 room	for 16 persons
A20	1 room	for 20 persons

All dressing rooms for 2 persons at Mezzanine Level fitted with private toilet and shower

Quick change room at downstage left and right

Running wardrobe - washing machines, dryers, irons & boards and steamers at M Level



**LIGHTING**

<b>Dimmer</b>	140 modules, Strand Lighting EC21, 5kW capacity each.				
<b>Control Board</b>	ETC Gio, with full backup control facilities, controllable of maximum 20480 parameters, located in Lighting Control Room at rear of Balcony.				
<b>Houselight</b>	Dimmable control in Lighting Control Room.				
<b>Circuit</b>	140 nos. 5kW channels, fixed wiring type, distributed at front of house, backstage & over stage. All channels are terminated to 15A socket outlets to British Standard.				
<b>Additional Power</b>	100A x 3 phases at side stage left and right; 63A x 3 phases, 32A x 3 phases at side stage left for temporary use. <b>Connection must be conducted by a local registered electrical worker.</b> <b>Hirer shall supply adequate circuit protective devices for all bring in electrical installation.</b> <b>13A wall-mounted socket outlets at UK standard are provided on the stage.</b>				
<b>FOH Position</b>	Lighting Bridge 1, 16.49m throw at 42 degree Lighting Bridge 2, 19.12m throw at 35 degree				
<b>LED Profile</b>	ETC	Source 4 Lustr 3 LED	46	Lx bridge 1, Lx bridge 2	
<b>Profile</b>	750W	ETC	Source 4 15/30°	20	Side slots, O/H and various locations
<b>LED Fresnel</b>	750W	ETC	Source 4 25/50°	40	Side Lx Tower
		ETC	Source 4 Lustr 3 LED Fresnel	32	O/H Lx bar
<b>LED Automated Lighting</b>		High End Systems	SolaFrame 1000	12	O/H Lx bar 2 Pool
			SolaFrame 750	2	Fixed installation above VIP Boxes
<b>PARCAN</b>	1kW	Par 64	Kupo Par-64LB	60	CP60, CP61 & CP62



							lamps, 30 pcs each	
<b>Cyclorama light</b>	200W	Altman	Spectra RGBA	CYC	200	20	O/H Lx bar 10 nos for mid BP Screen on Bar 33 10 nos for rear BP Screen on Bar 45	
<b>Ground Row</b>	200W	Altman	Spectra RGBA	CYC	200	10	Stage	
<b>Follow Spot</b>	2.5kW	Robert Juliat	Aramis			2		
<b>Effects</b>	2kW	Strand	Candenza EP			4		
<b>Projection</b>	750W	ETC	Source 4 25/50°			2		
<b>Effect Disc</b>			Fleecy clouds			2		
			Stormy clouds			2		
			Rain			2		
			Snow			2		
			Flame			2		
			Running water			2		
<b>Gobo Holder</b>	Size A	ETC	Source 4 15/30° and 25/50°			40		
<b>Iris</b>		ETC	Source 4 15/30° and 25/50°			20		
<b>Smoke Generator</b>		Look Solutions	Viper NT (DMX controllable)			2		
<b>Strobe Light</b>		Martin	Atomic 3000			2		
<b>UV-A LED Light</b>	120W	Wildfire	VioStorm 120			2		
<b>Other</b>	Side light tower		4-tier, 2m (H)			10		
	Tower equipment setup:	5 (top)	750W ETC Source 4 25/50°			2020mm*		
		4	750W ETC Source 4 25/50°			1820mm*		
		3	750W ETC Source 4 25/50°			1430mm*		
		2	Empty			Empty		
		1 (bottom)	750W ETC Source 4 25/50°			620mm*		
		<b>* = The height of equipment, measure from the centre of lens to the floor</b>						
	Light stand		1.80m (H)			8		
			0.12m (H)			12		
	Music light					90 (depends on the position)		

Supply of above equipment subject to availability on receipt of a lighting plan.

Equipment availability does vary slightly according to equipment conditions and maintenance. Check with Resident Technical Manager for any updates.

**Hirer will be provided with basic lighting only, from available hung equipment, if technical preparation time is less than 2 hours in the booking.**

All brought-in “Electrical and Stage Lighting Equipment” to be used in LCSD PA venues, shall meet the requirements of “Code of Practice for Electricity (Wiring) Regulations (2020 Edition)”. Please contact the venue management for any electrical safety concern. Website reference:

[https://www.emsd.gov.hk/en/electricity\\_safety/index.html](https://www.emsd.gov.hk/en/electricity_safety/index.html)



<b>SOUND</b>		
<b>Sound System</b>	d&b audiotechnik Q1 / Q-Sub (upper main left & right)	8 / 4
	d&b audiotechnik C7-Top / C7-Sub (lower main left & right)	4 / 4
	d&b audiotechnik Q-10 (delay loudspeaker for upper stalls)	2
	d&b audiotechnik E0 (front fill)	6
<b>Main Control Console</b>	DiGiCo SD7 Quantum:	
	Inputs	56
	Outputs	8
<b>Second Control Console</b>	DiGiCo SD12:	
	Inputs	32
	Outputs	32
<b>Microphone tie line</b>	Each side of the stage	15
	Orchestra pit	12
	Front stage	9
<b>Signal Processor (Pre-aligned, not loose equipment)</b>	BSS BLU806-DA	2
<b>Microphone</b>	AKG CK 91	2
	AKG C414B-ULS	4
	Crown PCC 160	4
	DPA 2011C	8
	DPA d:vote 4099	8
	DPA d:facto 4018	8
	Neumann KMR 82i (Short Gun)	4
	Neumann KMS 105	6
	Neumann KM 184	10
	Shure SM 58S	4
	Shure BETA 58	10
	Shure BETA 52A	2
	Shure BETA 57A	10
	Shure BETA 87A	2
	Shure MX418/C	2
	Sennheiser MD 421	7
<b>Wireless Microphone</b>	Sennheiser UHF wireless mic system	8 sets
	Bodypack : SK5212-II <b>OR</b>	8
	Handheld : SKM 5200-II	8
	Sennheiser EW300-500 G4 UHF wireless mic system	6 sets
	Bodypack : SK500 G4 <b>OR</b>	6
	Handheld : SKM500 G4	6
	<b>Max. 6 units with a minimum booking of 1 session (Incur extra charge)</b>	
<b>Stage Monitor</b>	Nexo PS 10	2
	d&b audiotechnik M4	10
<b>CD Player</b>	Denon DN-C635	2
<b>Mini-Disc Recorder</b>	Tascam MD-CD1	2
<b>CD Recorder</b>	Tascam SS-CDR200	2
	Tascam SS-CDR250N	2
<b>Multimedia Projector</b>	Panasonic PT-RQ35K (30,000 ANSI Lumens) with ET-D3LEU100 ultra short throw fix lens (incur extra charge)	1
<b>LED Surtitle</b>	LED horizontal display units (Located in front of	2 (incur extra charge)



**Display Board**            Proscenium at both side)  
                                  (2.53 x 1.43m) (W x H)

**COMMUNICATION**

Stage manager control panel at stage left  
Dual-ring intercom system for stage, lighting and sound (5 wired and 3 wireless)  
Cue light system  
Paging and show relay system  
Close Circuit TV system  
Production desk can be set at the middle of the stalls upon request

**Prior to booking date, please confirm with Resident Technical Manager for the availability of the equipment.**

**All required equipment will be set-up during the booking sessions; please allow adequate time for equipment set-up before performance or rehearsal**